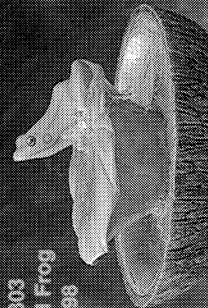


Featuring "Earth Tones" Glazes

DH2303
Lily Pad Frog
\$49.98



DH2256
Log Bird Bath/Fountain
2.5" X 12.5"
\$79.98



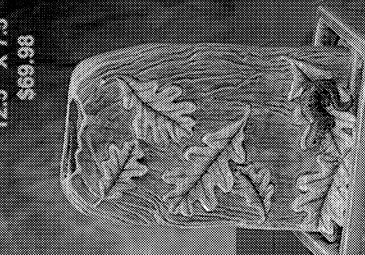
DH2301
Frog Splash Block
20.5" X 9"
\$99.98



DH2282
Fountain Base
3.5" X 9.5"
\$39.98



DH2284
Forest Fountain Top
12.5" X 7.5"
\$69.98



DH2297 - STONE CUT HORSES - GLAZED

MATERIALS AND COLORS NEEDED: ET05 Moonstone, ET10 Desert Breeze, DHB13 Fan Brush

- STEP 1: Clean greenware and fire to cone 03.
- STEP 2: Apply one coat ET05 to rock areas.
- STEP 3: Apply one coat ET10 to horses, slightly overlapping the ET05 on rocks.
- STEP 4: Apply two coats ET10 on entire piece.
- STEP 5: Fire to cone 05.

DH2297 - STONE CUT HORSES - ACRYLIC

MATERIALS AND COLORS NEEDED: Sea sponge, SP08 Matte Spray, DH45 Shadow Green, DH40 Turquoise, DH49 Premier Gold, DH08 Black, DH43 Teal

- STEP 1: Clean greenware and fire to cone 03. STEP 2: Basecoat piece Black.

DH2297 - STONE CUT HORSES - GLAZED

MATERIALS AND COLORS NEEDED: ET05 Moonstone, ET10 Desert Breeze, DHB13 Fan Brush

- STEP 1: Clean greenware and fire to cone 03.
- STEP 2: Apply one coat ET05 to rock areas.
- STEP 3: Apply one coat ET10 to horses, slightly overlapping the ET05 already applied on rock.
- STEP 4: Apply two coats of ET23 to entire piece.
- STEP 5: Fire to cone 05.

DH2299 - STONE CUT GRIZZLY BEAR

MATERIALS AND COLORS NEEDED: ET02 Blue Lagoon, ET23 Rugged Terrain

- STEP 1: Clean greenware and fire to cone 03.
- STEP 2: Apply one coat of ET02 to rock portion of piece.
- STEP 3: Apply one coat of ET23 to bear portion of piece, slightly overlapping the ET02 already applied on rock.
- STEP 4: Apply two coats of ET23 to entire piece.
- STEP 5: Fire to cone 05.

DH2300 - STONE CUT EAGLE

MATERIALS AND COLORS NEEDED: SP08 Matte Spray, various brushes, DH08 Black, DH09 Real Brown, DH12 Leather Brown

- STEP 1: Clean greenware and fire to cone 03.
- STEP 2: Basecoat entire piece with Black.
- STEP 3: Smack-dab piece first with Real Brown and then with Leather Brown. Paint eyes, inside of beak and toenails Black. Shade piece with Black and spray with Matte Spray.

DH1996 - RED BUD LEAF TILE DH1997 - CHESTNUT LEAF TILE

MATERIALS AND COLORS NEEDED: ET01 Black Forest, ET20 Celestial Night, ET24 Dark Canyon

- STEP 1: Apply one coat of ET01 to outside, flat surface of tiles.
- STEP 2: For Red Bud tile, apply two coats ET20 over entire tile. For Chestnut tile apply two coats ET24 over entire tile.
- STEP 3: Fire to cone 05.

GR1012 - PLAIN PILLOW VASE

MATERIALS AND COLORS NEEDED: ET01 Black Forest, ET24 Dark Canyon, DHB13 Fan Brush, Greenware.

- STEP 1: While clay is still wet, tear edge of vase and slightly bend edges. Clean and fire greenware to cone 03.
- STEP 2: Apply one coat of ET01 in a random, "pulled" pattern on outside of vase. Let the bottom edges of the glaze feather out towards the bottom of vase, but do not allow it to actually drip. Apply one coat ET01 on entire inside of vase.
- STEP 3: Apply three coats ET24 on outside of vase and two coats inside vase and on the bottom.
- STEP 4: Fire to cone 05.

DH 2296 - STONE CUT COUGAR

MATERIALS AND COLORS NEEDED: ET20 Celestial Earth Tone, DH27-Midnight Blue, DH45-Shadow Green, DH36-Navy Blue, DH49-Premier Gold, SP03-Gloss-It, SP02-Mask-It

- STEP 1: Clean greenware and fire to cone 03.
- STEP 2: Apply one heavy coat of Mask-It on rock around cougar. Let dry.
- STEP 3: Apply three coats ET20 Celestial on entire cougar. Remove Mask-It.
- STEP 4: Fire to cone 05.

- STEP 5: Apply one heavy coat of Mask-It on cougar, next to rocks.
- STEP 6: Basecoat rocks with a mix of Navy Blue and Shadow Green.
- STEP 7: "Pounce n' Blend" rocks with Midnight Blue and Premier Gold. Remove Mask-It.
- STEP 8: Touch up around cougar with Premier Gold. Float veins in rocks, first with Premier Gold, then with Midnight Blue.
- STEP 9: Apply two coats Gloss-It over rocks.

DH2298 - STONE CUT WOLF

MATERIALS AND COLORS NEEDED: Sea sponge, SP08 Matte Spray, DH08 Black, DH45 Shadow Green, DH40 Turquoise, DH48 Gold

- STEP 1: Clean greenware and fire to cone 03.
- STEP 2: Basecoat piece Black.
- STEP 3: Using a sea sponge and dip sponge in Shadow Green and sponge base then use small amount of Turquoise on base. Shade base with Shadow Green.
- STEP 4: Sponge wolf with Gold and shade with Black.
- STEP 5: Spray with Matte Spray.

DH2301 - FROG SPLASH BLOCK, DH2302 - PEDISTAL, DH2303 - LILY PAD FROG

MATERIALS AND COLORS NEEDED: DH08 Black, DH37 Cream, DH10 Mustard, DH03 True Orange, DH38 Grass Green, DH01 Daffodil, DH22 Christmas Red, DH31 Leaf Green, DH45 Shadow Green, DH09 Real Brown, SP13 Weather-It, ET06 Autumn Glow, ET11 Silver Birch, ET13 Tropical Oasis, ET18 Weeping Willow, ET04 Coral Reef, DHB13 Fan Brush.

- STEP 1: Clean and fire greenware to cone 03.
- STEP 2: For rock areas and lily pad: Roll inside of salamander fountain with slightly thinned ET04 Coral Reef. Apply one coat ET06 Autumn Glow to all rock areas. Then apply two coats ET1 Tropical Oasis. For tree pedestal: Apply one coat ET06 Autumn Glow to all wood areas, avoiding frogs and leaves. Then on inside of birdbath basin (where there is not bark) apply two coats of ET11 Silver Birch. On all remaining wood areas apply two coats ET18 Weeping Willow. Fire all glazed pieces to cone 05. STEP 3: Use a 60% Acrylic / 40% Weather-It mix for all stained areas. Frogs: Basecoat with Leaf Green; highlight lightly with Daffodil. Shade frogs with a wash of Shadow Green. Green Leaves: Basecoat Black. Webbrush with Real Brown. Webbrush again with Grass Green. Highlight edges and veins of leaves lightly with Mustard. Shade leaves with washes of Shadow Green and Black. Salamander: Basecoat Black. Webbrush with Leaf Green. Highlight with Christmas Red and then very lightly with True Orange. Paint Black markings and eye. Fall Leaves: Basecoat with Cream. Apply a wash of Mustard on entire leaf. Randomly tint leaves with washes of True Orange and Christmas Red. Shade edges and veins of leaves with a wash of Leaf Green.

* With Earthtones due to firing or application, resulting colors may vary.
* DHB13 Fan brush is recommended for applying Earthtones.

ProSeries Brush Line

DHB-1	#100 Lone Line (1/2 per pak)	\$42.60
DHB-2	#1 Rounded Dical (1/2 per pak)	\$46.60
DHB-3	#3 Short Rounded Dical (1/2 per pak)	\$35.60
DHB-4	#5 Small Shader (6 per pak)	\$35.30
DHB-5	#7 Angular Shader (6 per pak)	\$47.10
DHB-6	#12 Long Shader (6 per pak)	\$47.70
DHB-7	3/4" Glaze (4 per pak)	\$39.80
DHB-8	ProSeries Brush Kit (All 7 Brushes)	\$42.98
DHB-9	Glaze Brush Kit (7 different Brushes)	\$42.98

Brushes are only sold in pack form from the manufacturer. Brushes are discounted like molds.

Technique Books - All Technique Books are \$11.98

100	Current Catalog	
100A	The American Carousel	Sally Ann Danno
100B	Collectible Steins	Sally Ann Danno
100C	A Brush with Nature/ Sharon Kinzie	
100D	Native American Reflections	Sally Ann Danno
100E	Painting Nature Wonders	Sharon Kinzie
100F	How to Paint Eyes	
100G	Beautiful Backgrounds/ Sharon Kinzie	
100H	Mystical Creations	Sally Ann Danno
100I	Artistic Angels	Jona Ryan
100J	Call of the Wild	Jean Schwyer
100K	Flesh Tone	Sharon Kinzie
100L	Birds of the Wild	Sally Ann Danno
100M	Seasons of Bisque	Jean Schwyer
100N	Wet Brushing	Sally Ann Danno

FLYER MAILING PLAN

Please send me all available flyers and techniques and continue to send the new releases and techniques as they are available (\$25.00 per year, \$40.00 outside U.S.)

Name _____
Address _____
City _____ State _____ Zip _____
Phone (____) _____

To order call: Doc Holliday Ceramic Products
125 MacArthur Court, Nicholasville, KY 40356
(859) 887-1427 FAX (859) 887-2805
visit our website: www.docollidayceramics.com